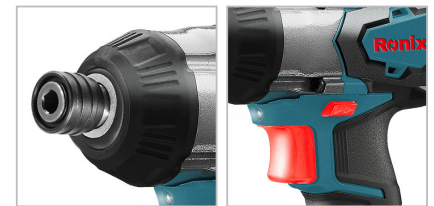


Cordless Brushless Impact Driver
20V

8906

- Super power 20V screwdriver enables perfect functionality in fastening with different torques up to 280 NM
- High-performance brushless, waterproof motor ensures maximum long-life
- Light-weight ergonomic small body design with considerable power
- 3-speed for Hi-Mid-Low RPM & IPM fastening control in a wide range of applications
- Metal gearbox enables heavy-duty applications and longer life-time
- High-resistance, anti-shock body designed with ergonomic rubber grip
- Automatic stop motion on loosening fastener
- Efficient in hard-to-reach and dark places thanks to the best LED worklight
- Battery charging indicator lets you know the battery level fast and easy



WITHOUT BATTERY WITHOUT CHARGER **lasting SERIES** BRUSHLESS MOTOR



Model	8906
Motor Type	Brushless
Battery Chemistry	Lithium
Chuck Size	1/4" hexagon
Battery Voltage	20V
No-load RPM	0-1600 RPM 0-2000 RPM 0-2600 RPM
Impact Rate	0-1800 IPM 0-2500 IPM 0-3300 IPM
Max Torque	280NM
Battery & Charger	Not included
Supplied in	Ronix color box